

TUDSU Referendum



What is a Referendum?

- A Referendum is a direct vote in which an entire electorate is invited to vote on a particular proposal.
- In this case, TU Dublin students are asked to vote in relation to TU Dublin SU's proposal.
- We will be making changes to our Constitution and Officer Structure.

What is a Constitution?

- A Constitution is a statement of the basic principles and laws of a nation, state, or group (in this case TU Dublin SU). The principles and rules set out in a constitution govern we, as a democratic organisation, must operate. This must be adopted by all members.
- For any changes to be made to TU Dublin SU's constitution, a Referendum must be held and at least 10% of the TU Dublin student body must participate.

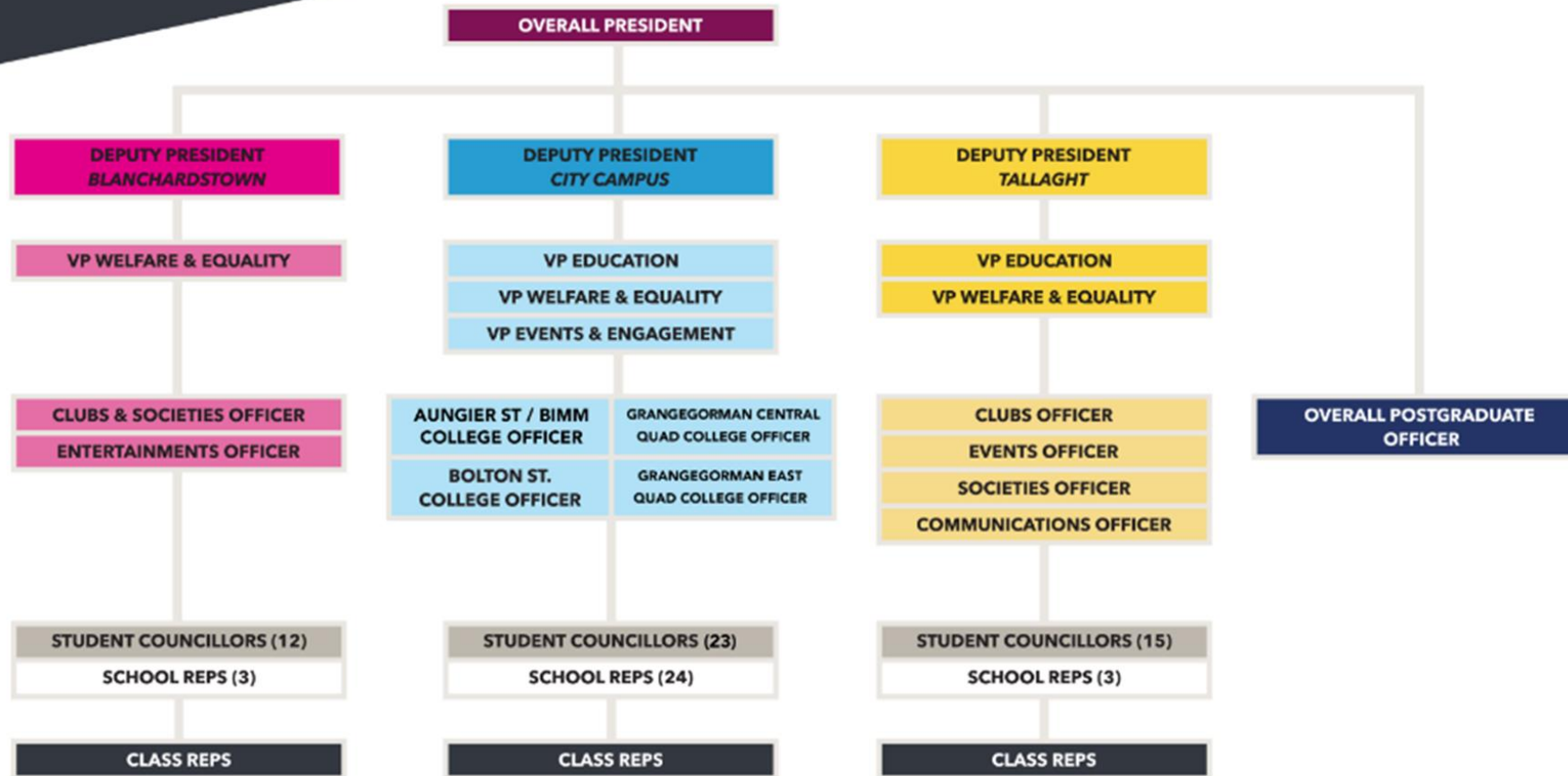
What are the main proposed changes?

- The Officer Structure
- Student Council
- The Impeachment process for Officers
- TUDSU CLG

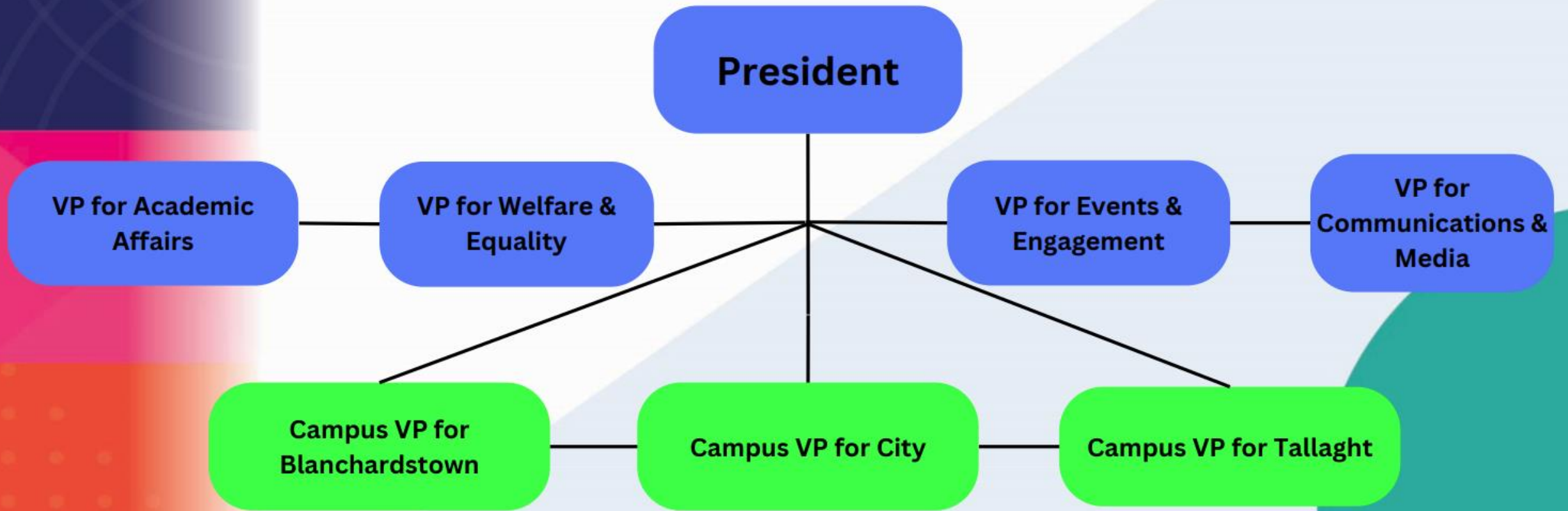
The Current Structure



EXECUTIVE STRUCTURE 2021/22



Proposed Executive Officer Structure 22/23



Proposed Part Time Officer Structure 22/23

Gender Equality

Gaelige

Sustainability

Ethnic Diversity

ACCESS

Disabilities

Mature Student

LGBTQ+ Rights

International Student

Postgraduate Officer

Part-Time Officers and School Reps Changes

- Part-Time Officers will now be voluntary overall roles across each campus. They will all be elected through student council and focus on specific themes.
- Due to the amalgamations of schools across TU Dublin, we no longer have School Reps due to the complex nature of having to elect them. They will be changed to student councillor seats instead to ensure that student representation is equal across the campuses.

Changes to Officer Structures

- **The existing officer structure had to be reviewed as per constitution**
- Changes were needed to make it better
- Duplication of roles and work

Principles:

- Campus representation
- Streamline the work and ensure collaboration
- Keep Students involved

Student Council Membership

- Student Council consists of 101 members including;
- 8 Full-Time Officers
- 1 Postgraduate Officer
- 9 Part-Time Officers
- 83 Student Councillors (distribution of seats between campuses is decided by EC)

Student Council Procedural Motion 9C

- We are making an amendment to procedural motion 9C - “A motion that the question be taken in specific parts”
- It will now be “A motion that the question be amended (this may include the inclusion or deletion of text)”

Student Council Point of Clarification

- We are introducing “Point of Clarification”
- Points of Clarification may be raised in the same way as Points of Order. They shall consist of relevant questions that are neither for or against the presented issue.
- This is to allow Student Councillors to ask questions without it getting shut down like with Points of Information.

Recall of Office/Impeachment Process

- Any position that is elected can be removed by a vote of the same electorate that elected them. This requires a 10% petition that leads to a vote.
- The removal of Full-Time officers has a separate process. 200 (Campus Specific VPs) and 400 (Overall Positions) students from the officer's electorate must sign a petition to be submitted to Electoral Commission, for it to go to a Student Council vote. A student Council vote where 66% must vote in favour to remove the officer in order to hold an all-student vote where a simple majority would be needed for the removal of the officer.

Changes to the board of TU Dublin SU CLG

- The changes in the officer structures cause changes to the board of TU Dublin SU CLG as follows:
- The Deputy Presidents in the Board of Directors are proposed to be replaced with the 4 Overall Vice Presidents
- The members of the Company are proposed to be 10, including the 3 Campus Vice Presidents, Postgraduate officer and 6 students (at least 1 from Blanch, 2 from City and 1 from Tallaght)